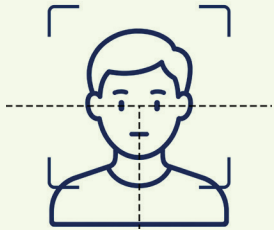


FACIAL RECOGNITION GUIDELINES

A safe, secure, faster way to access the terminal.

✓ DO



Present your face in a **straight, vertical** position.



Remain still during the scanning process.



Remove sunglasses, transition lenses, hats, headsets, and microphones prior to scanning.



Passenger Declarations:
The driver will complete the facial scan after document verification has been completed.

✗ DO NOT



Allow doors, seatbelts, or clothing to **obstruct the view** of your face.



Shade or cover the camera with hands, hats, or other objects. (Do not touch the reader.)



Tilt your head or lean outside of the vehicle door during the scanning process.



Scan your TWIC card.
(The TWIC card must remain on your person; scanning is not required.)

Thank you for your cooperation.