

GPA TAG PROGRAM



Table of Contents

- Overview and Benefits of GPA’s Tag Program 1**
- WinSCP sFTP Server 2**
 - Downloading the WinSCP Server 2
 - Logging into the Server 5
 - Using the Server 6
- TAG Reports - Imports..... 9**
 - Types of Import TAG Reports 9
 - Availability Report Example..... 10
 - Import TAG File..... 11
- TAG Reports - Exports..... 12**
 - Formatting Export TAG File 12
 - Types of Export TAG Reports 13
- TAG Reports – Non-BCO Accounts 14**
- Conclusion 15**
- SCAC Codes for BOLs.....16-18**

Updated 6/10/2024

Overview and Benefits of GPA's TAG Program

Description

The TAG Program was developed by GPA for our high-volume importers and exporters. This program improves efficiency by providing increased visibility on cargo from its manifest date to the time it leaves our terminal. Tagging adds an attribute to containers and bookings that makes it easier to track cargo as well as pull historical data and inventory for a customer.

Benefits To You

- Automatic container availability reports for both terminals
- Visibility to line and customs holds
- Gate activity
- Dwell time on terminal
- Up to date information on vessel ETAs
- Discharge and out gate times for imports
- Waybill information
- Increased capabilities for reports and historical information based on group code

Benefits To GPA

- Visibility to group's inventory on terminal
- Optimized handling
- More efficient delivery methods (deliver first available containers without digging) and improved turn times to motor carrier
- Government examinations, fumigation/transloading, and other special service requests
- Improved reporting

How to Download the WinSCP sFTP Server

Please note: You can use any sFTP server to transfer your files. WinSCP is a free server that we suggest. Below are the instructions for downloading and using WinSCP.

Click this link to launch WinSCP's download page:

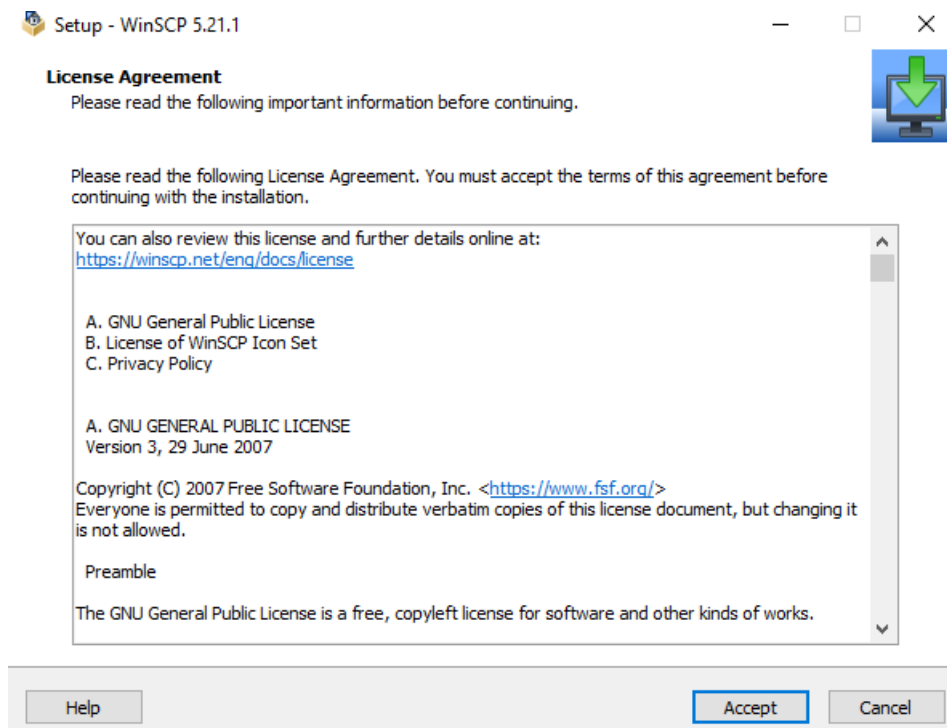
<https://winscp.net/eng/download.php>



Locate and download the current version download.

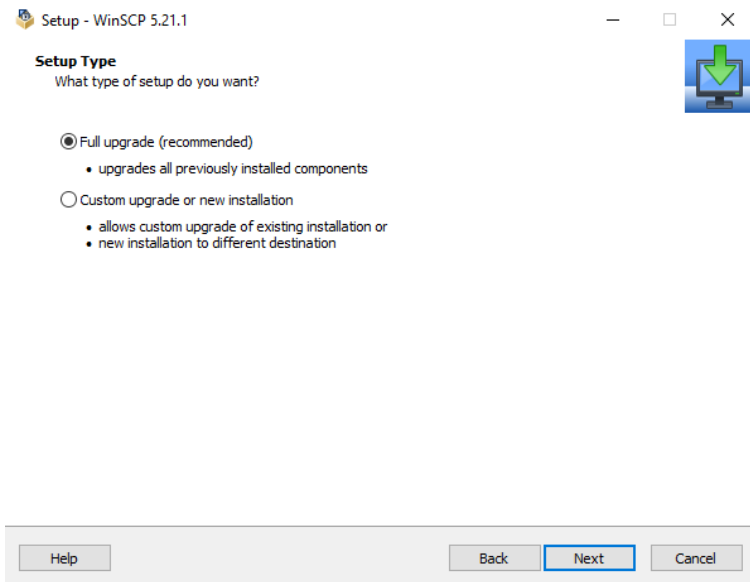


Run WinSCP-5.9.3-Setup.exe

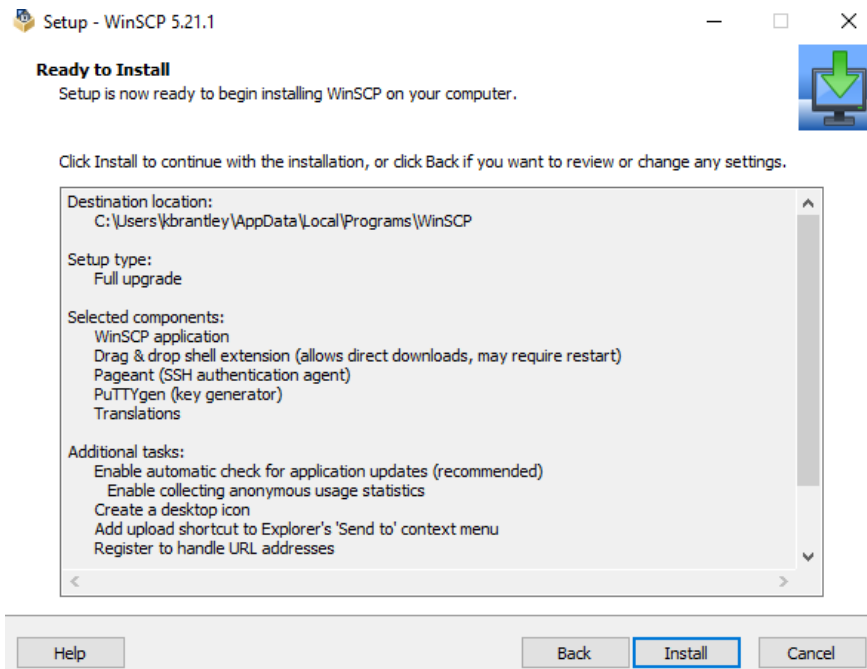


Click Accept

How to Download the WinSCP sFTP Server



Click Next



Click Install

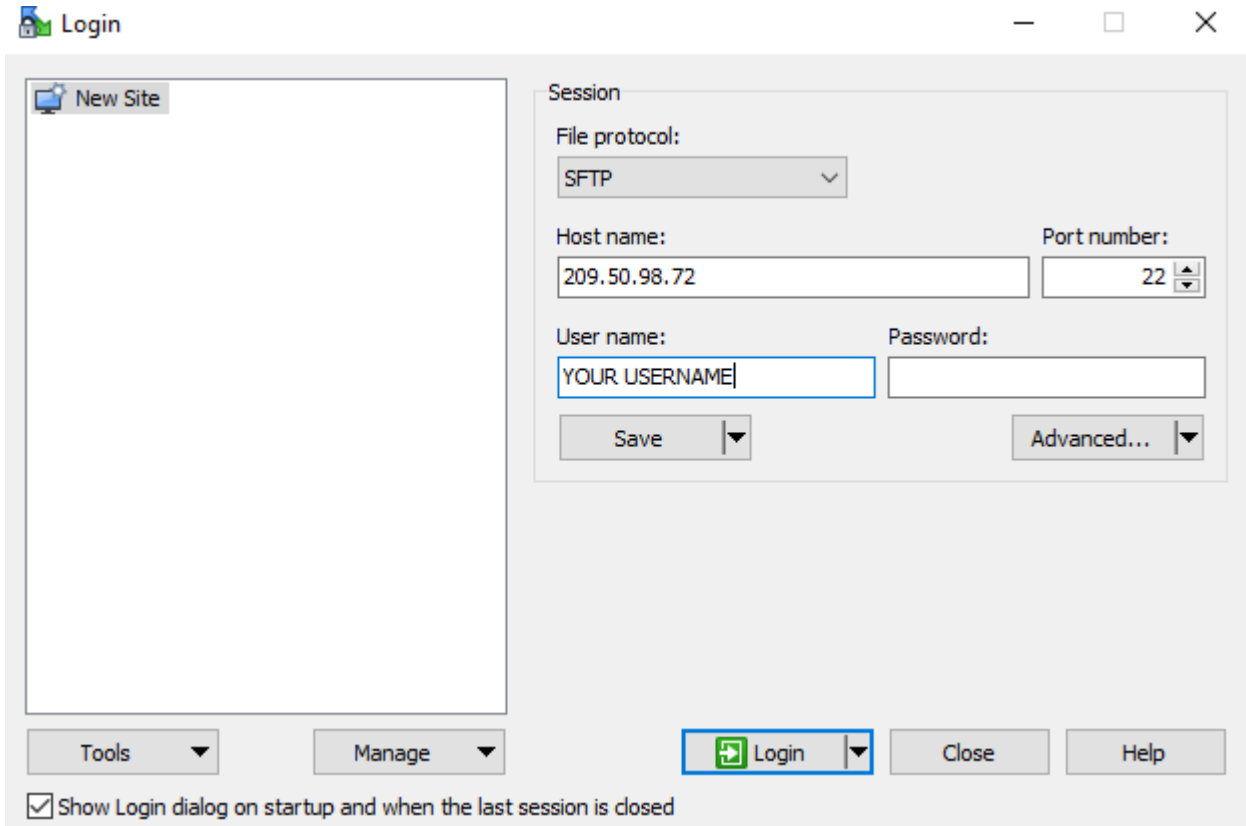
How to Download the WinSCP sFTP Server



Uncheck Open Getting Started page and click finish.

Logging Into the WinSCP sFTP Server

If you left Launch WinSCP checked, then this screen will come up shortly:



To log in, use the following information:

Host name – use one of the following:

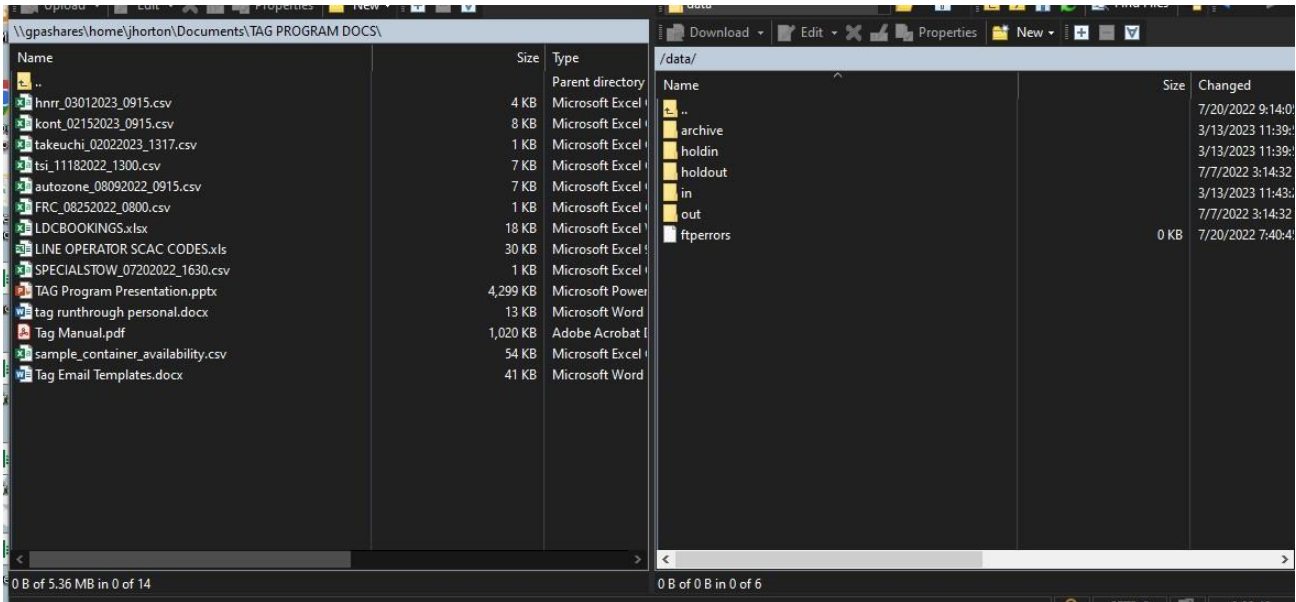
209.50.98.72 **or** gpasftp.gaports.com

Your WinSCP username and password (provided by GPA)

Click "Login"

Using the WinSCP sFTP Server

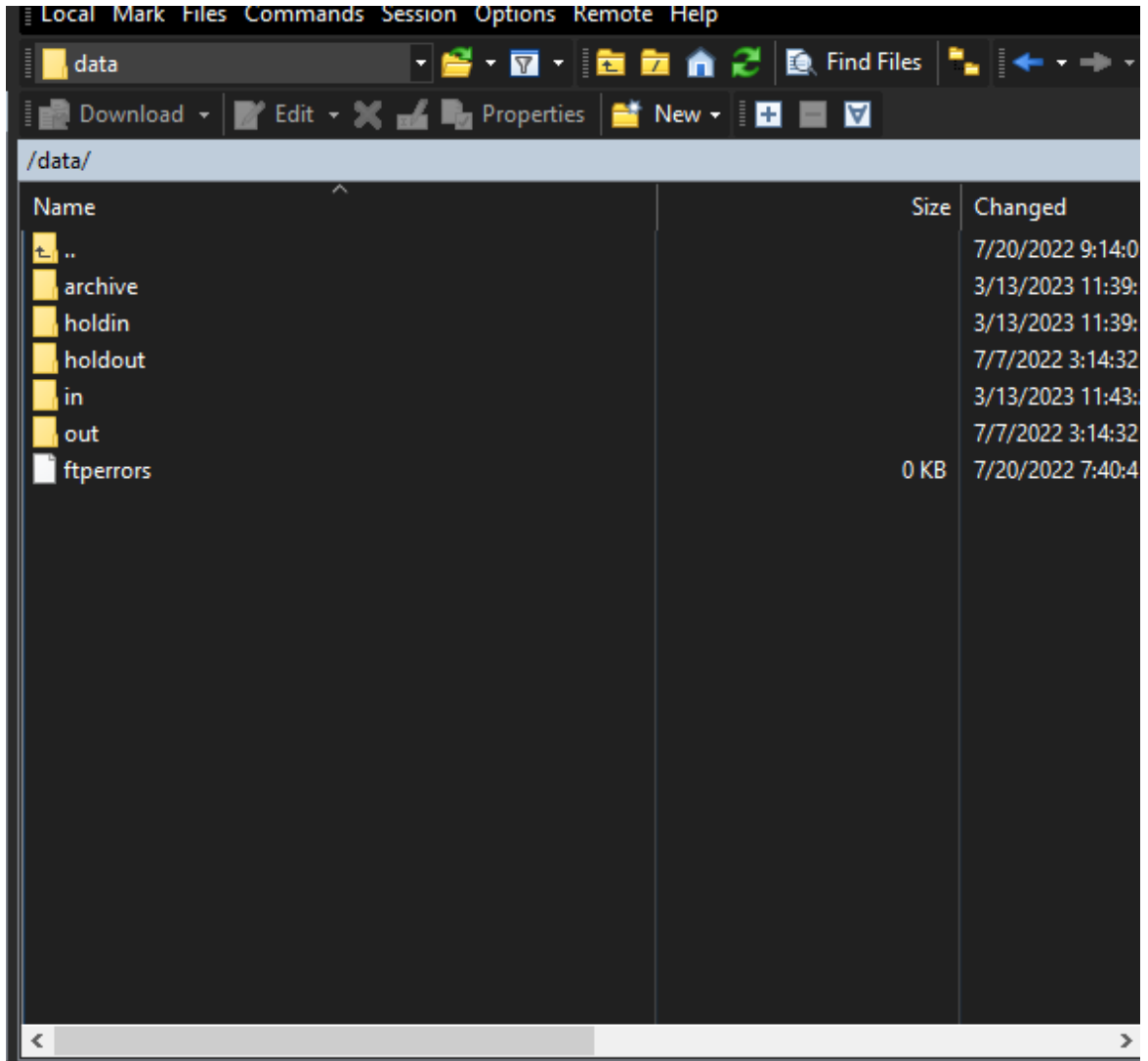
On the left side of the server will be your local drive. On the right side is GPA's drive.



On the left side, navigate to where your CSV tag file is stored on the computer. On the right side, click into the data folder.

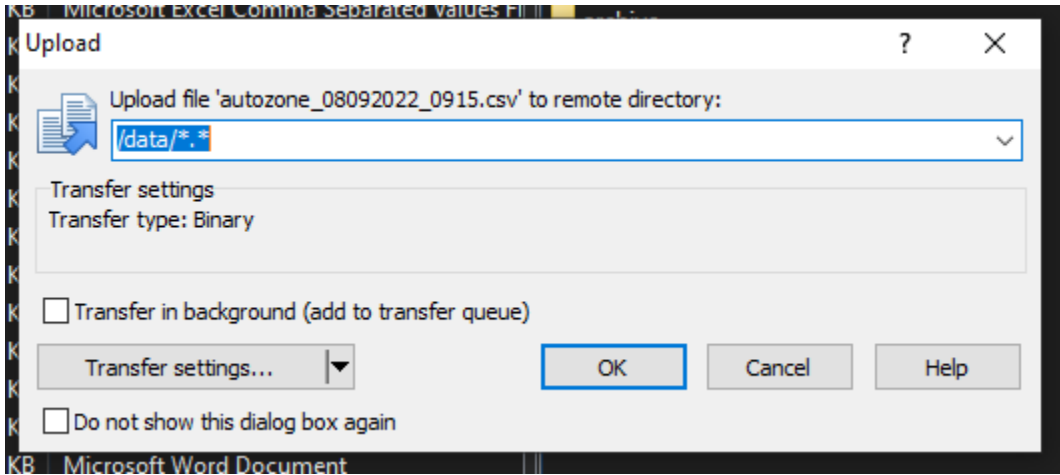
Using the WinSCP sFTP Server

Drag your CSV file from your directory on the left into the blank area beneath the files of the “data” folder



Using the WinSCP sFTP Server

After dropping the file, you will get this message:



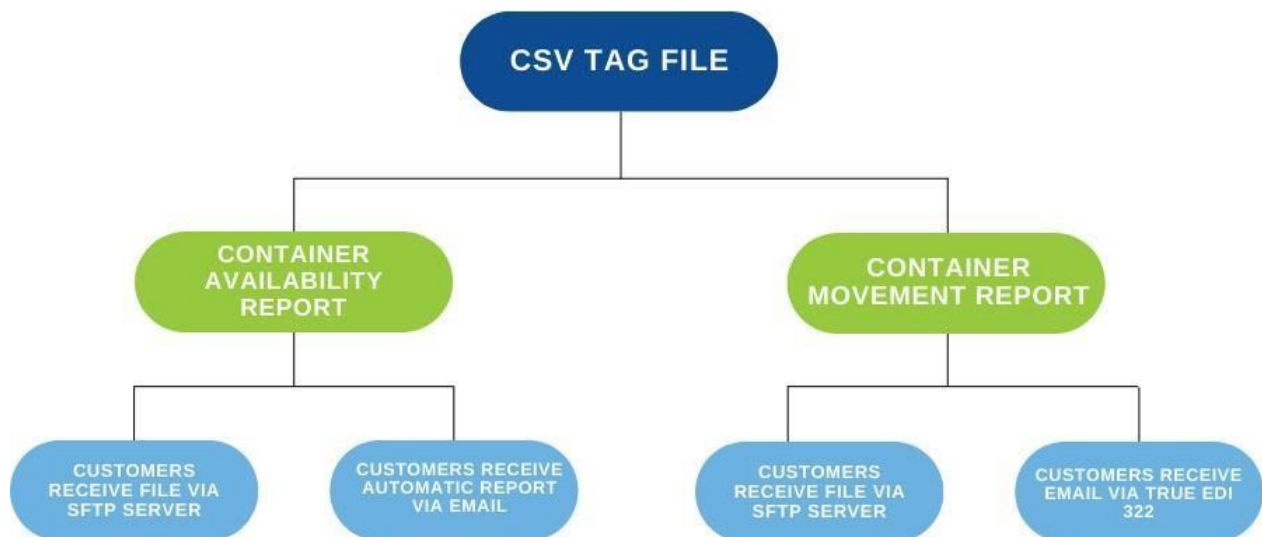
Click "OK"

The file will take 30-60 minutes to transfer and "tag" the containers.

Please note: Close and/or log out of the server as soon as you finish your file transfer.

TAGGING - Imports

There are two reports available when tagging imports – Container Availability and Container Movement. Imports will be tagged at the container level.



Container Availability Report: This report will give you an overview of your containers from their manifest to the time they leave the terminal. This report shows you holds and availability information. There are two options for receiving this report – you can receive a file via the WinSCP SFTP server, or you can receive the report directly to your email (frequency of one time a day or four times a day to multiple email recipients).

Container Movement Report: This report highlights movement in and out of the port. The customer specifies what unit events they would like to receive notifications on (ex: full out, empty in, etc.). This report can be received by the customer via the sFTP server (automatic email notifications are not available for this report).

TAGGING - Imports

Container Availability Reports will come as a flat CSV file and include the following information (if applicable):

- Container number
- Availability of container (yes or no)
- Location (V for vessel, Y for yard, C for community – truck/rail departure)
- Line status
- Customs status
- Bill of lading
- Status of other holds
- Discharge time
- Out gate time
- Steam ship line
- Vessel name
- Updated vessel ETAs
- Railroad/waybill
- Dwell time in yard
- Equipment size/type

	A	B	F	H	I	J	K	L	M	N	O	P	Q	R	S	T	U	V	W	X
1	CONTAINER AVAIL	LOCATION	LINE STAT	CUSTOMS	AGR STAT	OBL	OTHER HO	DISCHARG	OUT GATE	SS LINE	ETA	VESSEL	RR	DWELL	WAYBILL	C HOLD	TYPI	HOLD DAT	SIZE/TYPE	HGHT
2	XXXX4703	N	V	RELEASED	HOLD		6309408110	Y			XXX	#####	CMA CGM CHRISTOPHE COLOMB					VESSEL	9-Nov-21	40/DR/96
3	XXXX4703	N	V	RELEASED	HOLD		6309408110	Y			XXX	#####	CMA CGM CHRISTOPHE COLOMB							40/DR/96
4	XXXX4703	N	V	HOLD	HOLD		6312017960	N			XXX	#####	COSCO SHIPPING JASMINE							40/DR/96
5	XXXX4703	N	V	RELEASED	HOLD		6312902050	N			XXX	#####	CMA CGM ARGENTINA							40/DR/96
5	XXXX4703	N	V	RELEASED	HOLD		6311716920	N			XXX	#####	CMA CGM MAGELLAN							40/DR/96
7	XXXX4703	N	V	RELEASED	HOLD		6310714740	N			XXX	#####	CMA CGM MAGELLAN							40/DR/96
3	XXXX4703	N	V	RELEASED	HOLD		6311861150	Y			XXX	#####	CMA CGM CHRISTOPHE COLOMB					VESSEL	9-Nov-21	40/DR/96
3	XXXX4703	N	V	RELEASED	HOLD		6311861150	Y			XXX	#####	CMA CGM CHRISTOPHE COLOMB							40/DR/96

Please note: Additional columns marked as “GPA” columns are for internal use and will not have customer information.

TAGGING - Imports

To tag imports, customers will submit a CSV file via WinSCP. It is very important to have the file name and formatting of the sheet, precisely as noted in the directions below. GPA will create your WinSCP login credentials and give you a “BCO name”.

Example:

1. Receive login credentials and BCO name from GPA.
 - a. BCO Name: **IMPCARGO**
 - b. WinSCP Username: **impcco** (notice how the username can differ from the BCO name)

2. Format your tag file.
 - a. The file submitted will have a “5” in the A1 cell, and a “10” in every other cell in the A column, that has a container number in the corresponding B column. The B1 cell will have the **WinSCP username** (lowercase), and the list of containers underneath in cells B2 and below. The C1 cell will be blank. C2 and below will have the **BCO Name** in each cell corresponding to the containers in the B column (BCO name must be upper case). The D and E columns will be left completely blank. The F1 cell should be blank. F2 and below should have the Bill of Lading numbers associated with the corresponding container number in that row. ****Do not include the SCAC code in the BOL.**

	A	B	C	D	E	F
1	5	impcco				
2	10	OOLU9934470	IMPCARGO			65592810
3	10	TGBU9218257	IMPCARGO			65592810
4	10	CSNU7555865	IMPCARGO			49902818
5	10	CSNU8110529	IMPCARGO			49902818
6	10	FFAU3300750	IMPCARGO			49902818
7	10	WHSU5607020	IMPCARGO			49902818
8	10	WHSU5719647	IMPCARGO			49902818
9	10	WHSU5972151	IMPCARGO			49902818
10						

3. Name your tag file

- a. The file name will be named: bcname_date_militarytime.csv. Lowercase is preferred. The file must be saved as a CSV (Comma delimited) file. Round your military time to the closest quarter hour.
- b. File name: impcargo_09062023_1315.csv
- c. If your **BCO Name** has spaces in it, remove the spaces in your file name.

File name:	impcargo_09062023_1315
Save as type:	CSV (Comma delimited)

TAGGING – Exports

Tagging exports will be formatted differently, and you will tag the bookings instead of the units.

The below will be how you format your CSV file to tag your exports:
BCO Code, Booking, SCAC Code

	A	B	C
1	BCOCODE	NAM12837171	HLCU
2	BCOCODE	NAM12837172	HLCU
3	BCOCODE	NAM12837173	HLCU
4	BCOCODE	NAM12837174	HLCU
5	BCOCODE	NAM12837175	HLCU
6	BCOCODE	NAM12837176	HLCU
7	BCOCODE	NAM12837177	HLCU
8	BCOCODE	NAM12837178	HLCU
9	BCOCODE	NAM12837179	HLCU
10	BCOCODE	NAM12837180	HLCU

BCO Code

GPA will provide this to you – this will be specific to your bookings.

Booking

These will be your booking numbers that you want visibility on.

SCAC Code

This will be the steamship line's SCAC code. GPA can provide a workbook with these codes if needed.

You will save your sheet as a CSV file (specifically the CSV file type below) and the File Name must be formatted as bco_bkg_date_militarytime. Please note the server will not accept your file if it is not formatted this way. You will upload this CSV file to the WinSCP sFTP server.

File name:	bco_bkg_09062023_1315
Save as type:	CSV (Comma delimited)

TAGGING – Export Reports

GPA offers automated reports for exporters tagging their bookings. Export reports include:

1. **BRD (Begin Receive Date) Report** – Provides updates on vessel information for tagged bookings (as shown below).

	A	B	C	D	E	F	G	H	I	J	K
1	BOOKING	LINE ID	LINE NAME	SHIP ID	SHIP NAME	VOYAGE NBR	ETA	ETD	BRD	ATA	ATD
2	10252390	XXX	SSL NAME	OFF	OFF PORT	1	4/13/2016 0:00	12/31/2016 0:00	1/2/2016 6:01		

2. **Vessel Load Report** – Provides information on exports including their size type, outbound carrier (vessel), and in and out times (export time into terminal and time out on a vessel).

	A	B	C	D	E	F	G	H
1	TERMINAL	EQ_NBR	SZ/TP	CATEGORY	LINE_ID	IN_TIME	OUT_TIME	VESSEL
2	GCT	APHU6284810	40/HC	EXPRT	CMA	4/19/2024 9:38	4/27/2024 19:10	CMJY-APL NEW JERSEY
3	GCT	APHU6284810	40/HC	EXPRT	CMA	4/19/2024 9:38	4/27/2024 19:10	CMJY-APL NEW JERSEY
4	GCT	APHU6284810	40/HC	EXPRT	CMA	4/19/2024 9:38	4/27/2024 19:10	CMJY-APL NEW JERSEY
5	GCT	APHU6284810	40/HC	EXPRT	CMA	4/19/2024 9:38	4/27/2024 19:10	CMJY-APL NEW JERSEY
6	GCT	APHU6284810	40/HC	EXPRT	CMA	4/19/2024 9:38	4/27/2024 19:10	CMJY-APL NEW JERSEY
7	GCT	APHU6284810	40/HC	EXPRT	CMA	4/19/2024 9:38	4/27/2024 19:10	CMJY-APL NEW JERSEY
8	GCT	APHU6284810	40/HC	EXPRT	CMA	4/19/2024 9:38	4/27/2024 19:10	CMJY-APL NEW JERSEY
9	GCT	APHU6284810	40/HC	EXPRT	CMA	4/19/2024 9:38	4/27/2024 19:10	CMJY-APL NEW JERSEY

3. **Inventory Report** – Provides terminal inventory of exports with in times.

	A	B	C	D	E	F	G
1	TERMINAL	EQ_NBR	SZ/TP	CATEGORY	LINE_ID	IN_TIME	OUT_TIME
2	GCT	APHU7120426	40/HC	EXPRT	CMA	5/23/2024 9:54	
3	GCT	APHU7120426	40/HC	STRGE	CMA	5/16/2024 11:21	5/18/2024 11:25
4	GCT	APHU7240680	40/HC	EXPRT	CMA	5/23/2024 8:11	
5	GCT	APHU7240680	40/HC	STRGE	CMA	5/16/2024 13:01	5/18/2024 14:55
6	GCT	APHU7274545	40/HC	EXPRT	CMA	5/24/2024 15:52	
7	GCT	APHU7274545	40/HC	STRGE	CMA	5/20/2024 8:00	5/20/2024 12:39
8	GCT	APHU7322601	40/HC	EXPRT	CMA	5/23/2024 8:31	
9	GCT	APHU7322601	40/HC	STRGE	CMA	4/26/2024 8:42	5/20/2024 9:14
10	GCT	ARDU5005314	40/HC	EXPRT	CMA	5/22/2024 13:03	
11	GCT	ARDU5005314	40/HC	STRGE	CMA	5/3/2024 12:44	5/17/2024 11:16
12	GCT	BEAU4665531	40/HC	EXPRT	CMA	5/22/2024 6:36	
13	GCT	BEAU4665531	40/HC	STRGE	CMA	4/23/2024 9:51	5/22/2024 6:36
14	GCT	BEAU4704345	40/HC	EXPRT	HAP	5/29/2024 9:54	

TAGGING – Early Export Receival

To utilize our Early Export Receival program, a tag file must be submitted for billing purpose. Once you submit a tag file, all of the bookings that are tagged are welcome to be in gated for early receival. (as of 6/2024)

TAGGING – Non BCO Accounts

GPA also offers availability reports for non-BCO accounts, such as trucking companies and freight forwarders.

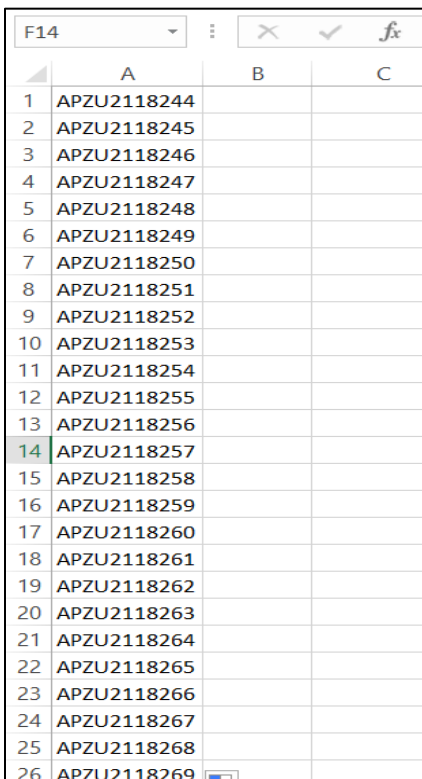
Non-BCO accounts will be provided with a WinSCP login by GPA. Customers will submit a list of containers in CSV form via the WinSCP server.

The file name must be formatted as below:
username_available_date_time.csv

For example, if WinSCP username is abcd:
abcd_available_09062023_1315.csv

File name:	abcd_available_09062023_1315
Save as type:	CSV (Comma delimited)

File format:



	A	B	C
1	APZU2118244		
2	APZU2118245		
3	APZU2118246		
4	APZU2118247		
5	APZU2118248		
6	APZU2118249		
7	APZU2118250		
8	APZU2118251		
9	APZU2118252		
10	APZU2118253		
11	APZU2118254		
12	APZU2118255		
13	APZU2118256		
14	APZU2118257		
15	APZU2118258		
16	APZU2118259		
17	APZU2118260		
18	APZU2118261		
19	APZU2118262		
20	APZU2118263		
21	APZU2118264		
22	APZU2118265		
23	APZU2118266		
24	APZU2118267		
25	APZU2118268		
26	APZU2118269		

Conclusion

Thank you for your interest in our TAG Program. To begin tagging your containers, please send an email to the contact below for more information.

GPA EDI Team
gpaediteam@gaports.com

SCAC Codes

Id	Name	SCAC Code
AGL	ALLSEAS GLOBAL LOGISTICS LTD	IMCB
AMSH	AMERICAN SHIPPING	ONEG
ANL	ANL (ANL SINGAPORE PTE LTD.)	ANLC
APL	APL (APL LIMITED)	APLU
ARC	AMERICAN ROLL-ON ROLL-OFF CARRIER	AROF
ASC	AMERICAN SHIPPING AND CHARTERING	HSLM
ARK	ARKAS CONTAINER TRANSPORT S.A.	AXVJ
BAH	BAHRI (BAHRI GENERAL CARGO)	NSAU
BBC	BBC	BBHY
BIL	BIGLIFT SHIPPING BV	BILH
CCM	Consoliated Chassis Management	SAHU
CEU	COSCO EUROPE	COEU
CIP	CHIPOLBROK AMERICA	CPJQ
CLA	CLIPPER AMERICAS, INC	CLPP
CLS	CHINALAND SHIPPING	CHPF
CMA	CMA CGM	CMDU
COS	COSCO	COSU
CRG	CARGILL	CINT
CRW	CROWLEY	CAMN
CSAL	CANADA STATES AFRICA LINE	CFLD
CSS	CLIPPER STEEL SERVICES	CCBE
CV2	CEVA LOGISTICS 2	THRS
CVA	CEVA LOGISTICS	CHVW
DDC	DELIVER DOMESTIC CONTAINER	DDCX
DGU	DAN-GULF SHIPPING	CTCJ
DSHP	DSHIP	DCAE
ECAR	EASTERN CAR LINER	ECLR
EUK	EUKOR	EUKO
EVE	EVERGREEN SHIPPING AGENCY	EGLV
GBL	GLORY BULK LTD.	GUKM
GRI	GRIMALDI	GDSL
GSS	GRIEG STAR SHIPPING	GSSW
GTO	G2 OCEAN (G2 OCEAN US, INC)	GTOE
HAP	HAPAG LLOYD	HLCU
HGH	HOEGH AUTOLINERS	HOEG

HLU	HAPAGE LLOYD2	HLUS
HMM	HMM AMERICA SHIPPING AGENCY, INC	HDMU
HSD	MAERSK A/S DBA HAMBURG SUD	SUDU
HSL	HASLER & COMPANY, INC	NDAW
IND	INDUSTRIAL MARITIME CARRIERS LLC	IDMC
INR	INDUSTRIA ARMAMENTO MERIDIONALE SPA	INRW
JUM	JUMBO SHIPPING CONTRACTORS B.V.	JUMB
KLN	K LINE	KKLU
LAN	LANPORT, INC.	LANP
LBG	LIBERTY GLOBAL LOGISTICS	LGLT
LHS	LIHUA SHIPPING	LLHP
LNA	LIGHTHOUSE NAVIGATION AS	LNAS
MAR	MARFRET USA INC	MFUS
MKK	Mahesh Test	MKK
MLB	MLB MANFRED LAUTERJUNG BEFRACHTUNG	MLBG
MLL	MAERSK LINE LIMITED	MAEI
MOL	MITSUI	MOLU
MSC	MSC	MSCU
MSK	MAERSK	MAEU
NDS	NILE DUTCH SHIPPING	NDAV
NIS	NISSAN LINES	NMCC
NPD	NEPTUNE PACIFIC DIRECT LINE	NPDT
NPS	NEPTUNE SHIPPING	FFHK
NPS2	NEPTUNE SHIPPING 2	YNHK
NRV	NORVIC SHIPPING	CPHH
NRV2	NORVIC SHIPPING 2	NVHI
NYK	NYK	NYKS
ODC	OLDENDORFF CARRIERS	OFCW
ONE	ONE - OCEAN NETWORK EXPRESS	ONEY
OOO	OOCL-ORIENT OVERSEAS CONTAINER LINE LTD.	OOLU
PAI	THE PASHA GROUP, DBA PASHA INTERNATIONAL	PSHV
PANO	PAN OCEAN	POBU
SAF	SAFMARINE	SAFM
SEL	SEALAND	SEAU
SHVY	SAL HEAVY LIFT	SCAB
SKS	S K SHIPPING	SKSM
SLD	SEA-LEAD SHIPPING DMCC	SJHH
SLN	STREAMLINES/SEA TRADE	SBVV
SML	SEABOARD MARINE LTD	SMLU
SPL	SPLIETHOFF TRANSPORT BV	SFFV
SPLI	SPLIETHOFF	SPLI
TBUL	T-BULK	TBPY
THOR	THORCO SHIPPING	THZS
TOKO	TOKO	TOKO
TUR	TURKON LINE	TRKU
UAL	UNITED ARAB	UASU
ULT	ULTRABULK	NULG
UNAV	UNIVERSAL NAVIGATION	OLBL

UNK	UNKNOWN FROM N4	UNKN
WGBG	WAGENBORG	WGBG
WHL	WAN HAI LINES (USA) LTD.	WHLC
WIL	WALLENIUS WILHELMSSEN	WLHN
XPF	X-PRESS FEEDERS	XPCD
YML	YANG MING	YMPR
ZEA	ZEAMARINE	ZEAM
ZEAM	ZEAMARINE USA	RZCS
ZIM	ZIM	ZIMU