

250 HR MECH PM KONE CRANE –SAV 18-41

CRANE # _____ TECHNICIAN(S) _____

HOUR METER READING _____

INITIAL WHEN STEP COMPLETED. []

01. MAINTENANCE HOIST- *CHECK OPERATION, CABLE & HOOK FOR WEAR AND DAMAGE. TAG OUT OF SERVICE IF UNSAFE. REPAIR AS SOON AS POSSIBLE.*

- [] MACHINERY ROOM
- [] BACK REACH
- [] BOOM TIP

02. STRUCTURE

- [] METALLIC STRUCTURE OF CRANE:
CHECK FOR ANY TYPE OF DAMAGE, STRUCTURAL FAILURE, OR LOOSE PARTS.
- [] BUMPERS:
CHECK THAT BOOM BUMPERS ARE IN PLACE AND FUNCTIONAL.
CHECK THAT TROLLEY BUMPERS ARE IN PLACE AND FUNCTIONAL.
CHECK THAT GANTRY BUMPERS ARE IN PLACE AND FUNCTIONAL.
- [] STORM BRAKES
CHECK FOR PROPER OPERATION
- [] HURRICANE TIEDOWNS
INSPECT AND MAKE REPAIR LIST

03. GANTRY

- [] GANTRY
CHECK CONDITION OR WHEELS, BRAKE PADS, LEAKS ON HYDRAULIC SYSTEM (PUMPS, VALVES, LINES ETC.) RECORD ANY REPAIRS NEEDED.
- [] GANTRY REDUCERS:
CHECK FOR LEAKS, LOOSE FASTNERS BENT OR MISSING GUARDS.
RECORD ANY REPAIRS NEEDED.

04. MACHINERY ROOM

- [] MACHINERY ROOM:
CHECK FOR CLEANIESS; INSPECT DOORS, LATCHES, WINDOWS ETC.
RECORD ANY REPAIRS NEEDED.
- [] REMOVE ALL TRASH AND DEBRIS.
- [] ENSURE ALL GUARDS ARE IN PLACE.

05. TROLLEY

- [] TROLLEY:
CHECK ALL WHEELS. RECORD ANY THAT ARE NOT IN GOOD CONDITION.
CHECK CONDITION OF TROLLEY THRUST ROLLERS. RECORD ANY REPAIRS NEEDED.
CHECK TROLLEY REDUCER, CHECK COUPLING FOR LEAKS, LOOSE FASTNERS, NOISE, ETC.
RECORD ANY REPAIRS NEEDED.
- [] REMOVE ALL TRASH AND DEBRIS.

06. CANTERNARY

- [] FORWARD CANTERNARY:
CHECK RUN ALIGNEMENT, CONDITION OF WHEELS, BEARINGS, FASTNERS, ETC.
RECORD ANY REPAIRS NEEDED.

250 HR MECH PM KONE CRANE –SAV 18-41

- [] REAR CANTERNARY
CHECK RUN ALIGNEMENT, CONDITION OF WHEELS, BEARINGS, FASTNERS, ETC.
RECORD ANY REPAIRS NEEDED
- [] CANTERNARY ROPES
CHECK CONDITION OF CABLE, SHEAVES, BEARINGS, ETC.
RECORD ANY REPAIRS NEEDED.

07. CAB

- [] CAB:
CHECK CONDITION OF CAB. CHECK DOORS, HINGES, LATCHES, WINDOWS ETC.
RECORD ANY REPAIRS NEEDED

08. HOIST

- [] HOIST REDUCERS:
CHECK COUPLINGS, CHECK FOR LEAKS, VIBRATIONS, LOOSE FASTNERS, ETC.
RECORD ANY REPAIRS NEEDED.
- [] HOIST THRUSTERS:
CHECK FOR PROPER OPERATION, ADJUST THRUSTER TRAVEL IF NEEDED.
RECORD ANY REPAIRS NEEDED.
- [] HOIST ROPES:
CHECK CONDITION OF ROPES, SHEAVES, SLAPBOARDS, ETC...
RECORD ANY REPAIRS NEEDED.

09. BOOM

- [] BOOM REDUCERS:
CHECK COUPLING, CHECK FOR LEAKS VIBRATIONS, LOOSE FASTNERS, ETC.
RECORD ANY REPAIRS NEEDED.
- [] BOOM THRUSTERS:
CHECK FOR PROPER OPERATION. ADJUST THRUSTER TRAVEL IF NEEDED.
RECORD ANY REPAIRS NEEDED.
- [] HOIST ROPES:
CHECK CONDITION OF ROPES, SHEAVES, SLAPBOARDS, ETC...
RECORD ANY REPAIRS NEEDED.

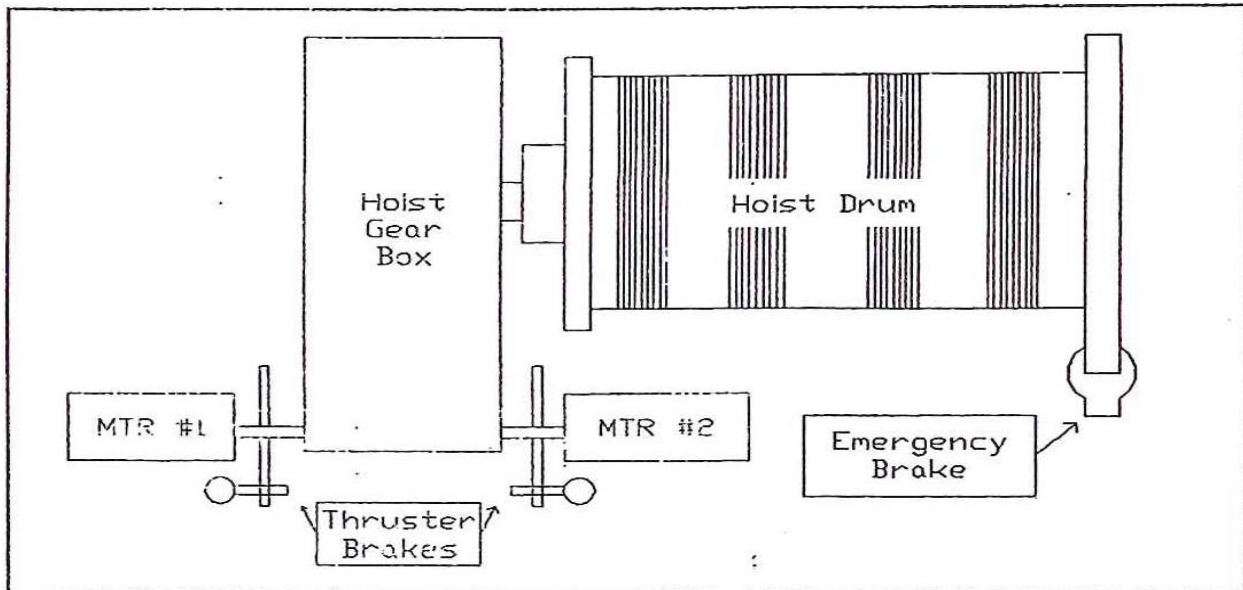
10. MAINTENANCE HOIST

- [] MACHINE ROOM:
VERIFY THAT MAINTENANCE HOIST WORK CORRECTLY.
RECORD ANY REPAIRS NEEDED.
- [] BACK REACH:
VERIFY THAT MAINTENANCE HOIST WORK CORRECTLY.
RECORD ANY REPAIRS NEEDED.

ADDITIONAL NOTES:

250 HR MECH PM KONE CRANE –SAV 18-41

J-8 Hoist (SAV: 18-41)



MTR RRK#1				UP RIVER	DOWN RIVER
	DISC CONDITION		PAD THICKNESS		
	RESV/STROKE		TENSION AS FOUND		
	DISC RUN OUT		ADJUSTED		
			AIR GAP		

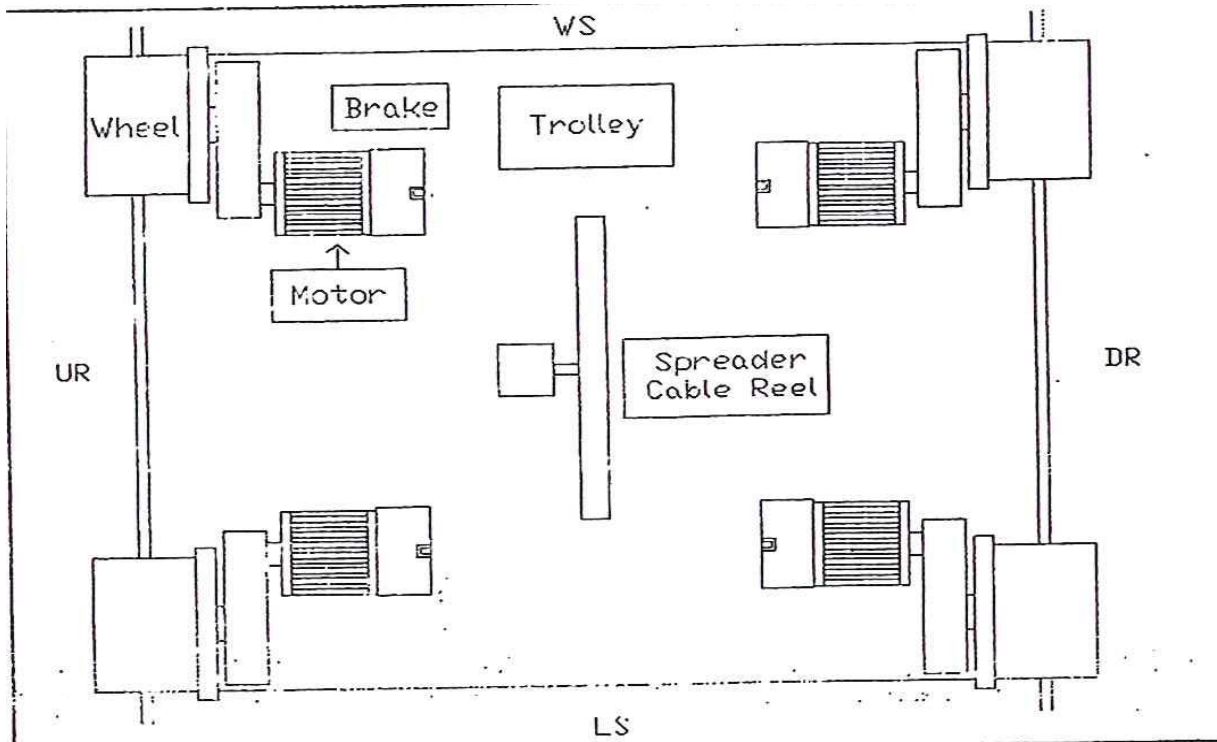
MTR RRK#1				UP RIVER	DOWN RIVER
	DISC CONDITION		PAD THICKNESS		
	RESV/STROKE		TENSION AS FOUND		
	DISC RUN OUT		ADJUSTED		
			AIR GAP		

	Check Gearbox oil level and drum coupling wear indicator (RECORD). Take oil Sample.				
	Check Coupling, check leaks, vibration, ETC. (RECORD).				
EMERGENCY HOIST BRK				UP RIVER	DOWN RIVER
	DISC CONDITION		PAD THICKNESS		
	HYP PRESS		AIR GAP		
	RESV OIL LEVEL				

Notes: _____

250 HR MECH PM KONE CRANE –SAV 18-41

05 Trolleys (SAV: 18-41)

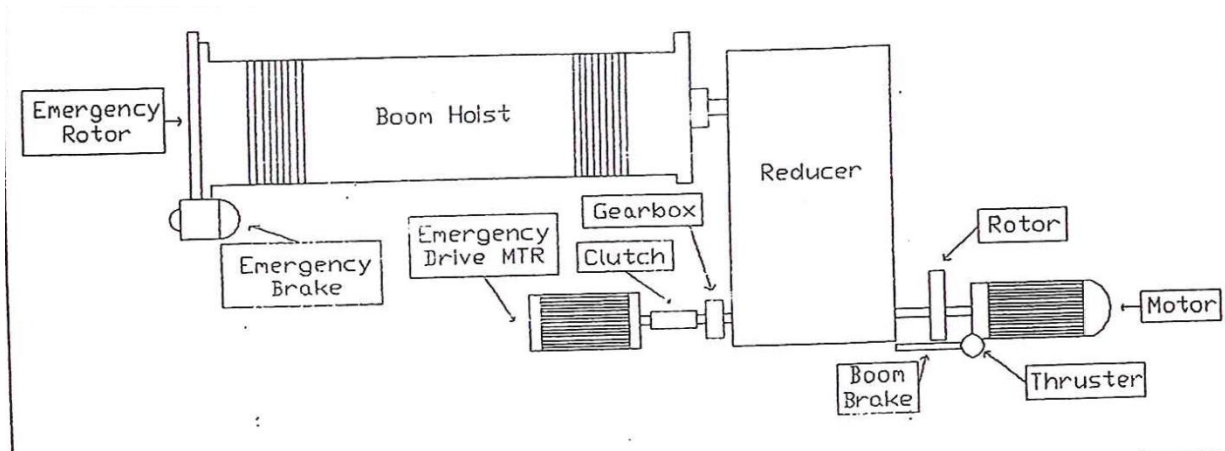


	Check all wheels. Record any that are not in good condition (Indicate on Chart).
	Check condition of Thrust Rollers. Record any repairs needed.
	Check reducers for leaks, loose fasteners, noise, ETC.
	Check oil levels of gearboxes, including cable reel.
	Check condition of rails for indication of out-of alignment
	Check general condition of Hoist + Canternary Cable Guides
	Other:

Notes: _____

250 HR MECH PM KONE CRANE –SAV 18-41

09 BOOM HOIST (SAV: 18-41).



BOOM HOIST BRK				UP RIVER	DOWN RIVER
	DISC CONDITION		PAD THICKNESS		
	RESV/STROKE		TENSION AS FOUND		
	DISC RUN OUT		ADJUSTED		
			AIR GAP		

BOOM HOIST EMER				UP RIVER	DOWN RIVER
	DISC CONDITION		PAD THICKNESS		
	HYD PRESS		AIR GAP		
	RESV OIL LEVEL				

	Check coupling, check for leaks, vibration, ETC. (RECORD)
	Check gearbox oil level and drum coupling wear indicator. (RECORD)

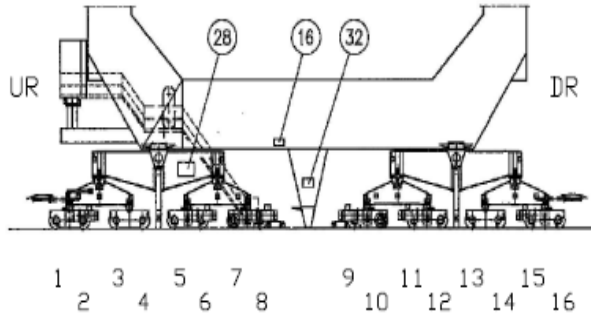
Notes: _____

250 HR MECH PM KONE CRANE –SAV 18-41

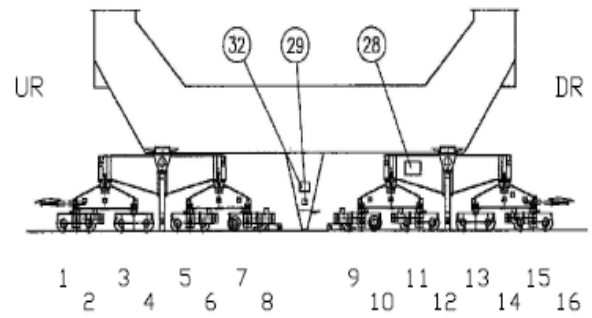
CRANE ID: _____

DATE: _____

LAND SIDE



WATER SIDE



LAND SIDE

- #1 _____
- #2 _____
- #3 _____
- #4 _____
- #5 _____
- #6 _____
- #7 _____
- #8 _____
- #9 _____
- #10 _____
- #11 _____
- #12 _____
- #13 _____
- #14 _____
- #15 _____
- #16 _____

WATER SIDE

- #1 _____
- #2 _____
- #3 _____
- #4 _____
- #5 _____
- #6 _____
- #7 _____
- #8 _____
- #9 _____
- #10 _____
- #11 _____
- #12 _____
- #13 _____
- #14 _____
- #15 _____
- #16 _____